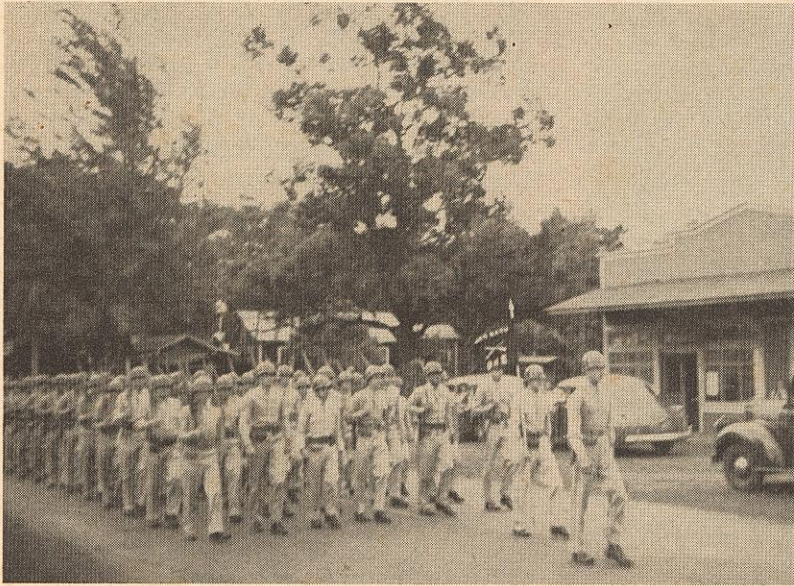
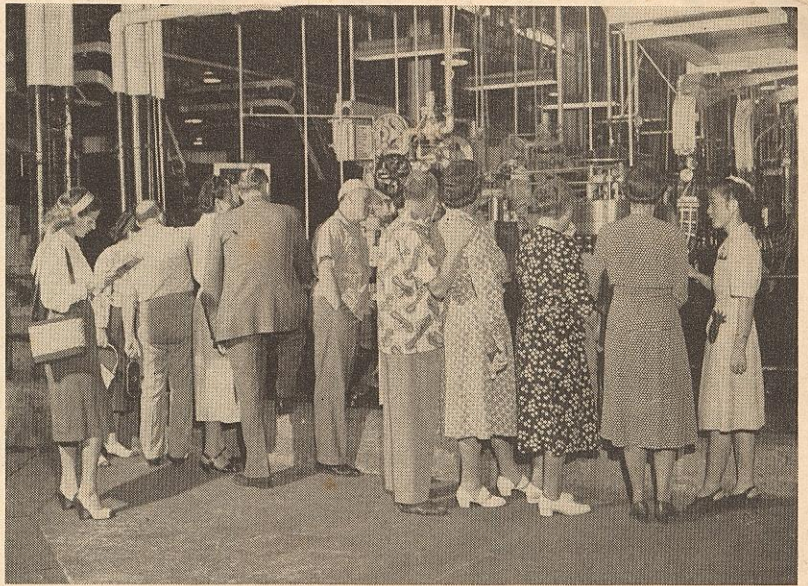


SNAPSHOTS



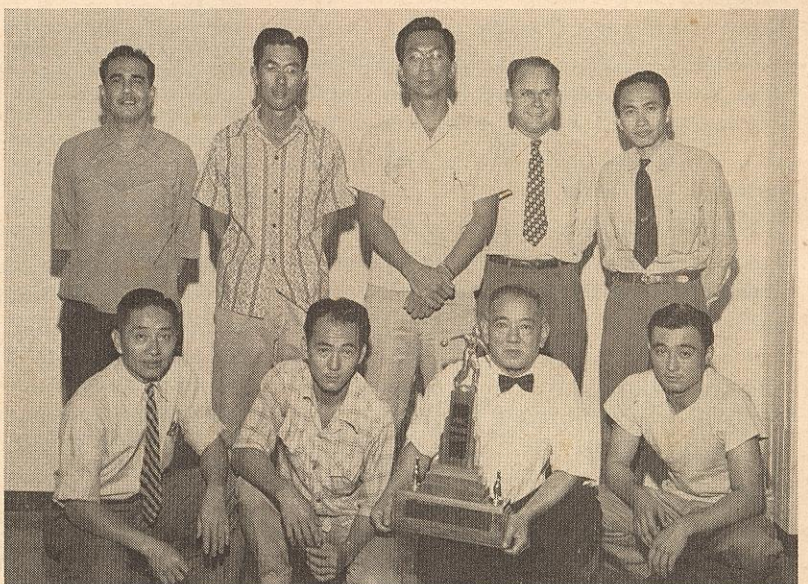
ARMY DAY was the occasion for a special celebration at Wahiawa. Officers and men from Schofield Barracks assembled at Fred Wright Park across the street from the Hapco office and marched from there through the downtown streets.



CANNERY TOUR is a "must" for every tourist in Honolulu. The company also welcomes local residents, especially the families of Hapco employees. Come in and see how the pineapples get into cans.



LANAI COWBOYS shown here are Samuel Kanahale (left) and John Richardson, both of whom are returning to the Pineapple Isle ranch after a day on the range. John is a kamaaina, having been a cowboy for Hapco for 23 years.



HAPCO BOWLERS WHO DEFEATED Libby teams are pictured here. L. to r., (back) D. Burkett, Kenneth Yuen, H. Lai, J. Ray, A. T. Chang; (front) J. T. Yuen, R. Yamaguchi, J. Ching (captain), T. Azumi. Missing: K. M. Chun, R. Tanaka, W. Shinyama.

Sec. 562, P. L. & R.
U. S. POSTAGE
PAID
Honolulu, Hawaii
Permit No. 115