

LĀNA'I CULTURE & HERITAGE CENTER

**E Ho'ohanohano 'ana i ka wā mamua, a e Ho'olako 'ana i ka mua aku!
(Honoring the Past, and Enriching the Future!)**

**A 501(c)(3) Non-Profit Charitable, Museum, Research and Educational Organization
P.O. Box 631500 · Lāna'i City, Hawai'i 96763 (808) 565-7177
info@LanaiCHC.org · www.LanaiCHC.org**

NĀ HOALOHA O LĀNA'I: Volume 5, Issue 1. January 2012

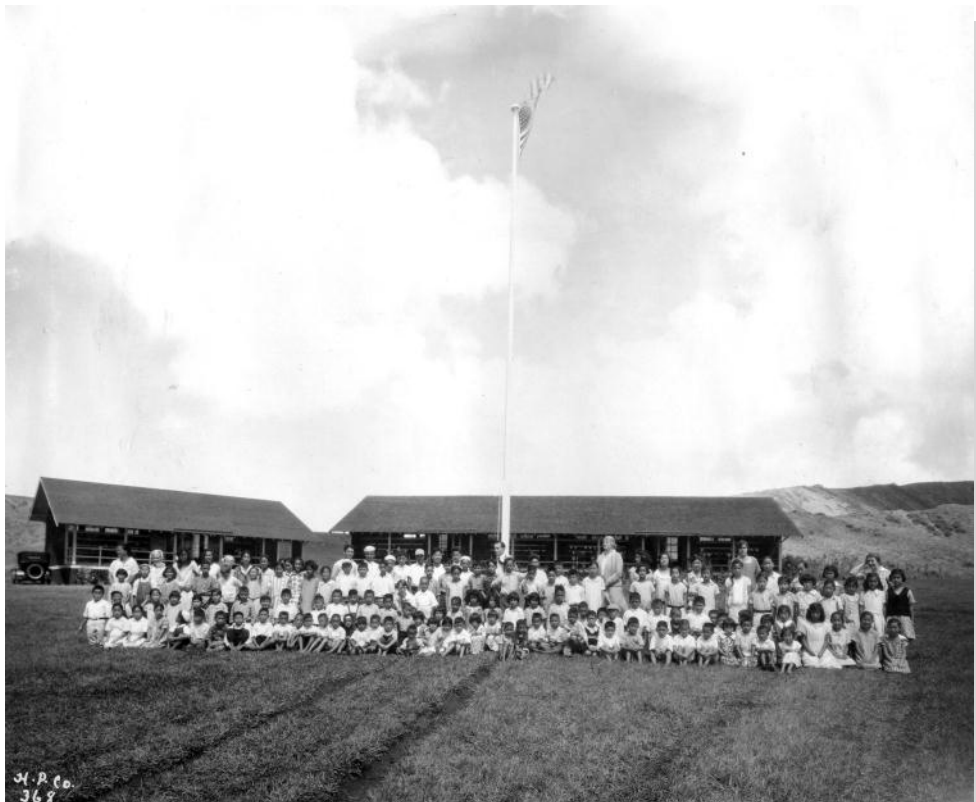


**Keahiakawelo –
ka lama o Lāna'i**

NEWS FROM THE LĀNA'I CULTURE & HERITAGE CENTER

Aloha — It is a new year. We hope that this note finds you and yours well and that 2012 will bring with it many blessings. In this newsletter you will find much to celebrate in the history of Lāna'i—the legacy of our natural and cultural landscape and the stories of our island people. Much has happened over the last year, and this month we mark the beginning of our third year in the new community heritage center. The Lāna'i Culture & Heritage Center (Lāna'i CHC) opened its climate controlled archival facility on January 16, 2010, in a renovated section of the old Dole Plantation Administration Building. The center serves as the foundation for gathering, conserving and sharing the rich history of Lāna'i. Our programs make the natural and cultural history of Lāna'i—spanning 1,000 years of Hawaiian residency on the island, 100 years as a ranch, 3 years as a sugar plantation, and 70 years as a pineapple plantation—available to everyone, as we honor the legacy of the land, people and culture of our island home.

In this newsletter we share with you glimpses into our island history, an overview of work that has been undertaken by the Lāna'i CHC with the help of its many partners, donors and supporters, and share with you our goals and vision for the future. To accomplish the work of passing a community legacy on to future generations, and acknowledging the hard work of our elders who made Lāna'i a place that has enriched the lives of many, we also come to you asking for your help. To succeed we need to developing a stable funding base. Just to keep our doors open, keep the heritage collections safe and pay our monthly bills we need \$175,000.00 a year. If we are to continue our educational outreach and working in the field as community stewards of Lāna'i's cultural-historical sites, we need to develop a funding base and are working on the formation of an charitable endowment for the Lāna'i CHC. Your donations, large or small, will go toward ensuring that this community program, envisioned more than 20 years ago—and now a reality—will perpetuate the rich cultural legacy of Lāna'i and her people for generations to come.



The future of Lāna'i in 1926. Students of the new plantation community posed in front of the Kō'ele School (now the Cavendish Golf Course). Their parents came to build Lāna'i City and the plantation, and these young students are among our grandparents. Their work built a life for us. (Photo from the HAPCo Album in the collection of the Lāna'i CHC)

Kūpuna taught us: "I ka lōkāhi ko kākou ola ai!" (Our well-being is in unity!). Together, we can honor our elders, the island of Lāna'i, and the history of our island people. Mahalo a nui for your help in the past, and we ask for your continued support to carry this work forward.

THE LĀNA‘I CULTURE & HERITAGE CENTER—PROGRAM HISTORY

MISSION AND VISION

The Lāna‘i Culture & Heritage Center seeks to inspire people to be informed, thoughtful and active stewards of Lāna‘i’s heritage by preserving, interpreting and celebrating Lāna‘i’s natural history, Hawaiian traditions, diverse heritage and cultures, and ranching and plantation era histories.



Ka Lanakila Church at Keomoku Village in 1950. This historic church was once at the center of Lāna‘i’s largest and most important historic community. It was last used in 1950, and is the last wooden building standing from the old village. By 2010, the church was on the verge of collapse. (Photo from the collection of Suki Richardson Nakoa)

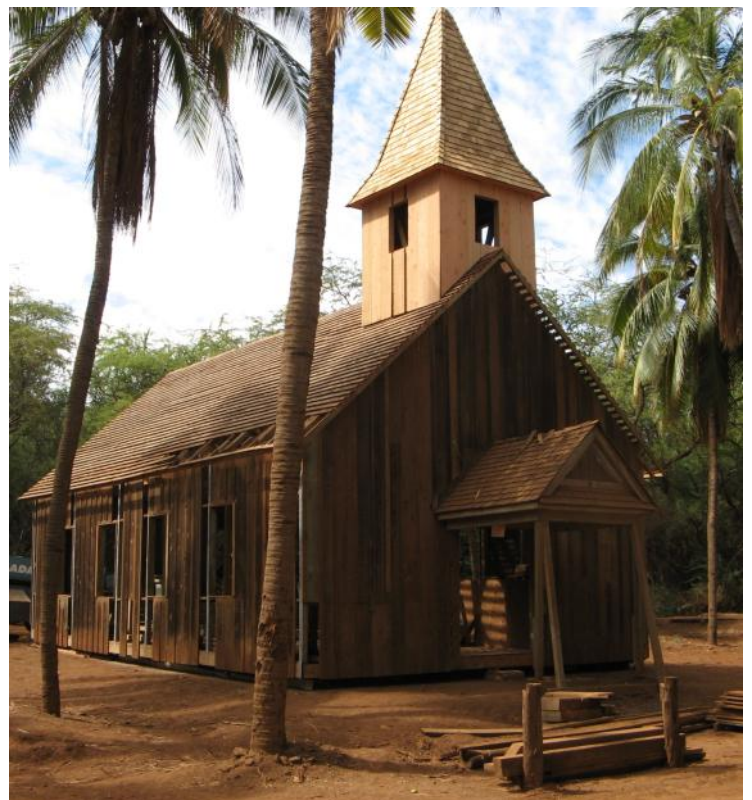
Beginning in 2010, a grant from Trustees of the Office of Hawaiian Affairs enabled the Lāna‘i CHC to engage in a heritage stewardship program. Major funding from the Agape Foundation subsequently brought community members (students and adults) into the program and has enabled the stabilization of Ka Lanakila Church. The building is an island treasure, restoration is nearing completion, and it is hoped that by June 2012, the community will gather at Keomoku to celebrate this part of our island history. (Photo No. AHM_5185, courtesy of Albert H. Morita)

The Lāna‘i CHC is the beneficiary of a Memorandum of Agreement (MOA) entered into in 1987 by five parties: Lanaians for Sensible Growth; the Office of Hawaiian Affairs; the State Department of Land and Natural Resources; Hui Mālama Pono o Lāna‘i (a native Hawaiian Organization on Lāna‘i) and Castle & Cooke, Resorts LLC. The purpose of the MOA was to address community concerns for the care of the unique cultural and natural resources of Lāna‘i. The importance of this mission has become even more critical with the passing of time.

The land changes, our elders pass away, and new generations lose touch with their heritage and the hard work of their elders.

The Lāna‘i CHC is a 501(c)(3) non-profit, charitable organization. Following lengthy discussion and planning in the community, the Lāna‘i CHC formally opened its doors on October 1, 2007. Between October 1, 2007 to December 31, 2009, the Lāna‘i CHC was situated in a 600 square foot office, from which the history and resources of Lāna‘i were shared with almost 12,000 people.

During that time, Trustees of the Office of Hawaiian Affairs, numerous other organizations and donors (including Castle & Cooke Resorts, LLC), and island residents contributed significant funding to the program, including the major capital improvements program of the Lāna‘i CHC.



On January 16, 2010, the Lānaʻi CHC opened the doors of its new archival-display facility, situated in the heart of the former Dole Plantation Administration Building. Between January 2010 and December 31, 2011, nearly 18,000 people participated in Lānaʻi CHC’s indoor and field programs. Funding from the Office of Hawaiian Affairs and the Agape Foundation also facilitated the development of a stewardship program, helping residents and visitors engage in work to stabilize and protect some of Lānaʻi’s treasured cultural-historical resources.



This work is done to help fulfill our mission and living vision to inspire people to be informed, thoughtful and active stewards of their heritage by preserving, interpreting and celebrating Lānaʻi’s Hawaiian heritage, natural history, diverse cultures, and ranching and plantation era histories.

Four generations of Lānaʻi residents gathered together on January 16, 2010 to celebrate the opening of the new Lānaʻi CHC. One of the highlights of the day was the planting of pineapple, where elders as old as 94 worked side-by-side with keiki in planting pineapple in the heritage center gardens.

The Lānaʻi CHC has established a model community heritage program that other communities have expressed interest in creating in their own communities. We need your help to ensure that the history of our island home will be passed on, and that new generations of “heritage stewards” will be prepared to assume responsibility for their island legacy.

Lānaʻi Culture & Heritage Center Board of Directors:

- Albert Morita, President
 - Colbert Matsumoto, Vice President & Secretary
 - Pamela Mae Alconcel, Treasurer
 - Jay Ballesteros
 - Sheila Black
 - Joan de la Cruz
 - John Schaumburg
 - Martha Evans, Immediate Past President and Advisor
- (All board members are volunteers who serve the people of Lānaʻi.)

Staff:

- Mikala Enfield, Operations Assistant/Interpreter
- Kepā Maly, Executive Director

Operations & Stewardship Volunteers (2011):

Megan Amby, Kekoa Carlos Benanua, Isaac Calderon, Irene Cockett Perry, Deborah Dela Cruz, Gloria & Reid Del Rosario, Kyle Ganer Eskaran, Bob Hobdy, Kaulana Kahoʻohalahala, Sally & Robin Kaye, Robert Kinoshita and Pine Enterprises, Inc., Zeth Kipi, Weston Leslie, Onaona Maly, Genji, Toshiko & Stacy Miyamoto, Julie Morita, Randy Mosher, Warren & Susan Osako, Ben Ostrander, Anthony Pacheco, Kevin Pitsch, Shelly Preza, Hy Hoe Silva, Viola Silva, Keao Kaopuiki Soriano, Phillip Sowers, Momi & Gary Suzuki, Simon Tajiri, Edwin & Austin Urpanil, Glen Yoshimoto; staff of the Lānaʻi Native Species Recovery Program; staff of Cultural Surveys Hawaii; students of Nā Pua Noʻeau—Papa Alakaʻi/ Lānaʻi HES; the University of Hawaii Archival/Library Sciences staff and students; and many other tireless volunteers who care about Lānaʻi’s heritage resources.

LĀNA'I CHC: PEOPLE, EVENTS AND PLACES IN 2011



January 15, 2011—Lāna'i ohana and visitors celebrated the first anniversary of the Lāna'i CHC. Guests were treated to mele and hula. Here, Chantell Schilling's "Tamatea Nui Polynesian Dance Studio perform.



Lāna'i CHC volunteers and staff pause for a photo break: Stacy Miyamoto, Mikala Enfield, Genji Miyamoto, Albert Morita and Gary Suzuki in the archives.



Residents and visitors alike learn about Lāna'i's history through exhibits at the Lāna'i CHC.



John Moody and his grandfather, Ross Moody, returned the 1911 Avery Truck to Lāna'i, fully restored.



University of Hawai'i Archivists and Library Sciences staff and students provided Lāna'i CHC staff and volunteers with a workshop on caring for Lāna'i 's heritage collections.



Office of Hawaiian Affairs Trustees and Staff visited cultural sites on Lāna'i. Here, standing at the hill of Kānepu'u.



“Mālama pono i ka ‘āina aloha!” Stewardship of the land being undertaken by crews of the Lāna‘i CHC and Lāna‘i Native Species Recovery Program. This work is being done to save some of Lāna‘i’s cultural resources from destruction by invasive plant overgrowth and neglect. Major funding for the work has been a gift of the Agape Foundation.

Papa Alaka‘i students of Lāna‘i High School worked during the summer with archaeological field staff under Cultural Surveys Hawai‘i as a part of the Lāna‘i CHC Ka‘ā Traditional Cultural Properties Study, funded by a grant of the Office of Hawaiian Affairs.



Pineapple, for 70 years the industry of Lāna‘i, may be seen blooming and fruiting in the Lāna‘i CHC garden. Much aloha to Uncle Genji Miyamoto and family for their constant care of the interpretive gardens.



For the future! As part of the Lana‘i CHC programs students traveled into the field on Lana‘i and learned about the importance of the native ecosystem from esteemed naturalist, Bob Hobdy.



The restored 1911 Avery Truck was returned to Lāna‘i by the Moody family, and displayed for the community on December 3-5, with the help of many partners. The truck is now in safe storage, but we are hoping to set up a permanent display soon.

ALOHA LĀNAI BENEFIT FUNDRAISING EVENT

The Lānaʻi Culture & Heritage Center is embarking upon a Benefit Drive with a special event and concert program on March 25th, 2012 on the island of Oahu. The benefit event will feature several activities and special programs, and be hosted with the help of many partners. A special concert will feature the musical artistry of young, outstanding Hawaiian entertainers Kūpaoa, Nā Palapalai and Waipuna. The evening will also include hula from members of various Hālau Hula including, but not limited to, Hālau Ka Pā Hula o Kauanoē o Waʻahila, and Hiʻiaka i nā Maka Lehua. Performances will also include Kumu Hula from Lānaʻi, Lynnette Kaopuiki and Laʻikealoha Hanog, as well as Malia Peterson (Miss Hula 2002, Hula Hālau o Kamuela) as a part of the cultural celebration.

The Aloha Lānaʻi event seeks to create broader awareness of Lānaʻi's history and generate greater support for the mission and programs of the Lānaʻi CHC. The event will share the cultural legacy of Lānaʻi with people beyond our island shores who have connections with Lānaʻi.

March 25, 2012 at Saint Louis Campus – Mamiya Theater (Oahu)

Tickets on Sale: \$25.00 pre-sale; \$30.00 at door (For pre-concert tickets, secure credit card charges may be processed by calling 808.565.7177 (Lānaʻi), or 808.744.8806 (Oʻahu); or through email inquiries to info@lanaichc.org)



PROGRAM

Outside in the Courtyard (4:00 p.m.)

- ◆ Strolling musicians.
- ◆ Previewing of the Voices of Lānaʻi oral history program featuring the stories of elder families of Lānaʻi (produced by Jazz Alley TV and Lānaʻi CHC with support from the Office of Hawaiian Affairs and funds raised in the 2009 Lānaʻi concert presented by Kealiʻi Reichel and hālau).
- ◆ A Silent Auction featuring a handmade ukulele by Lānaʻi-born woodworker, Warren Osako; a two night stay at Four Season Lānaʻi; and trips, books, arts, crafts and merchandise from Lānaʻi. (Many island businesses, corporate sponsors and entertainers are contributing to the Aloha Lānaʻi Benefit Event, full details will be made available in later flyers and notices.)
- ◆ Food and non-alcoholic beverages will be offered for sale by hālau participants to support their activities.
- ◆ Sale of CDs from contributing musicians.
- ◆ Sale of Lānaʻi CHC publications—E ʻIke Hou iā Lānaʻi, The Story of Lānaʻi (G. Munro), Lānaʻi City Guide, Lanai Folks, the Kaʻā Ethnographic Study; Lānaʻi CHC t-shirts, and a special “Aloha Lānaʻi t-shirt, and much more.

In Mamiya Theater (6:00 p.m.)

- ◆ Welcome presentation/program background and call for support.
- ◆ Raffle giveaway & Silent Auction.
- ◆ Music and hula (35-40 minutes).
- ◆ Short talk-story session
- ◆ Raffle giveaway & Silent Auction.
- ◆ Music and hula (35-40 minutes).
- ◆ Short talk-story session & intermission.
- ◆ Raffle giveaway & Silent Auction.
- ◆ Music and hula (35-40 minutes).
- ◆ Final comments, acknowledgements; announcement of grand prize winner and aloha to all.

Arrangements for program and sponsor acknowledgements are still being made, and will be announced in later communications and at www.lanaichc.org.)

2011 NĀ HOALOHA O LĀNA'Ī—THE FRIENDS GIVING ORGANIZATION OF THE LĀNA'Ī CULTURE & HERITAGE CENTER



The Lāna'ī Culture & Heritage Center is a 501(c)(3) nonprofit organization as defined by the IRS. Your donation helps us care for and protect our valued collection of artifacts and historical resources; and enables us to continue our stewardship programs. We sincerely appreciate your kind support and contribution.

MAHALO A NUI!

BENEFACTORS:

The Agape Foundation
The Office of Hawaiian Affairs

SUSTAINING:

Sheila (and Duane) Black
Shirley A. Estes
Patricia Greenwell
Hawaii Educational Council
Tom & Linden Caldwell Hickey
Robin & Sally Kaye
Robert Kinoshita
Victoria Larsen
Kepā & Onaona Maly
Allan & Donna Martin
Kenneth K. Martinez Burgmaier/Jazz Alley TV, Inc.
Albert H. & Julie Morita
George M. Morvis, Jr.
William G. & Jean Munro
Warren & Susan Osako
Pacific Whale Foundation/Sea Sports Cruises
Pine Island Market, Ltd.
G. Skip & Debra Rowley
Ron Yara & Margaret Eaton

SUPPORTING:

Joseph & Georgia Abilay
George & Janet Allan
Charlotte Babcock
Alan Calhoun & Debbie Wheeler
Mike & Kathy Carroll
Stephen Cheikes & Cynthia Brander Smith
Lorry Cornish *
Joan de la Cruz
Dean & Gloria Del Rosario
Claudia Dissel
Vincent & Genevieve Dole
Judy & Wayne Earl
David & Sheila Gardner
Elisabeth Grove/Grove Insight
Lisa Grove & Stephen Becker
Francis S. Haines
Neil & Mariane Hannahs
Sharen Hashimoto
Scott & Christie Higashi

SUPPORTING (continued):

Loretta & Mark Hellrung
Diane & Ron Hoge
Dennis & Bonnie Hokama
Rosemary Rice & Guy Ishimoto
Jay & Maureen Ishimoto
John & Valerie Janikowski
Patricia & Ken Kupchak
Lanai Oil Company
Lāna'ī Hospitality Partners
Lāna'ī 'Ohana Poke Shop
Chris Lovvorn
Ron & Phyllis McOmber
Mary G. Merritt
Leroy & Esther Meshel
Richard and Patricia Morita
Melvin & Nancy Nakamura *
Crieghton K. Nobui
Roy & Kay Okamoto
Barry & Suzie Osman
Kazuko Oyama
Pacific Legacy, Inc. Employees
Pele's Other Garden
Margaret Platt
Tracey J. Saiki
John & Donna Schaumburg
Mike & Diana Shaw
Kitty Muller Simonds
Rodulfo & Jean Sumagit
Leila & Neal Tamashiro
Nancy & Wallace Tamashiro *
David & Jill Theno
Karen & Richard Willis
Glenn & Linda Woo (Woo Fam. Charitable Fndtn.)
Yamada-Scott Family Foundation

KAMA'ĀINA & VISITING:

Anonymous
Carol & John Abbe
Joseph & Georgia Abilay
Ann M. Arakawa *
Charlotte Babcock
M./M. Mariano Bacalso

2011 NĀ HOALOHA O LĀNA'I-DONORS CONTINUED

KAMA'ĀINA & VISITING (continued):

Terry A. Baird
Susan C. Bitler *
Dixie Buckley
Carol Bushey
J.B. Cabanting *
Gregorio Cabuslay
Kristen Caldwell
Jane H. Campbell *
CBR Committee/HSTA *
Mark A. Chai
Patrick Conant
Mark Eckenrode
Alan & Melinda Emmel
Robin Lyn Fancy
Jimmy & Mamo Fernandez *
Richard & Margaret Foster
Hideaki & Dorris Fujimoto
June E. Fukumitsu
Gloria Gorter *
Theodore & Ann Gurniak
Haines/Kelly Family
Jeda Hanog
Christopher C. Harvey
Setsuko "Cookie" Hashimoto
Jerold & Carol Hayashida
Lynette Higaki
Kiwae & Riki Hokama
Joy Holland
Sarah Horcajo
Michael & Susan Hunter
Herb & Edna Hussey
Shelley & Dean Ishimoto *
Joy Cockett Jacobs
Japanese Embroidery Guild *
Michael Jordan
Edith Kam
Rev. M. Lei Kanipae
Lynette Kaopuiki & Hālau
Japanese Embroidery Guild
Family of Ken & Dee Kauffman
Kiyomi Kodama *
William & Katherine Knapp
Jo-Ann Komori *
Ronnie & Theresa LaClair
Janet & Richard Lai
Nancy Belez Lantz *
Guia Lasquete
Ronnie & Theresa LeClair
Abraham Liebhaber
Zachary Liebhaber
Kenneth & Yvette Mailo
Kepā & Onaona Maly * *
Mitsuko Matsuda



Matsuko Matsumoto
Naomi Matsuura
Dave Matthews & Tim Reynolds
Fred & Carolyn McKelvey
Setsuko Mendes
M./M. Mitsunaga
Tamo Mitsunaga & Kay Ponder *
Susan Miyamoto *
Genji & Toshiko Miyamoto
Bobbie Ruidas Mizuno
Julieann Mock Chew
Sherri Ann Mora
Carol K. Nagano *
Stephanie Nagata *
Florence K. Nakama *
Ruth Nakasone
Winifred Nakamura & Family *
Barbara Ono *
Stanley & Midori Oshima
Gary Oshiro
Pua Paoa
Henry & Teresita Pascua
Irene Kamahuialani Perry
Terry & Darlene Plunkett
Vincent J. Le Pore, Esq.
Dr. Richard & Lorraine Quigley
Jim & Judy Rabe
William & Amy Ruidas
Molly & Howard Sakamoto
Hideko Saruwatari
Lani Scott *
M./M. Takao Shikuma *
Gail Shin
Jaime & Kjersten Smith
Vinel & Aaron Sugino *
Shunichi Sugino *
Tamo & Sally Takahama
Alan & Kimberly Tate
Rita Thomas & Jim McBride
Margaret Tom
Wendy Wichman
Luke & Rhonda Wilson
Annette A. Yonamine *
Beverly Zigmund



Notes: * Donations made In Memory of
Duane Black.
* Donations made In Memory of:
Lloyd & Nina Cockett
Venus Gay Holt
Gavin Badi Welch
Nani Ann Wilson

Aloha ke Akua pū kākou!

HISTORY FROM OUR FILES

During 2011, research continued in local and national archival repositories in an effort to bring home the records of Lānaʻi's history. The results of the research are being compiled, indexed and placed in the online archive at www.lanachc.org, with the help of Mikala Enfield, Onaona & Kawena Maly, Debbie Dela Cruz, Sally Kaye, Shelly Preza, and Megan Amby. As a result of years of research, a 400 page traditional cultural properties study of Kaʻā Ahupuaʻa, including many Hawaiian language accounts, land history, stories of people on the land was compiled. Many of the Hawaiian and English language accounts have never before been referenced or easily available to the general public. The study may be viewed at www.lanaichc.org, click "Kaa Ethnographic Study."

NEWS FROM KŌʻELE IN 1903. Among the interesting narratives uncovered through our research is this account of a storm that hit Lānaʻi in 1903. It was during this storm that the large Norfolk Pine at Kōʻele was split and the two tops were formed.

"The Evening Bulletin, Honolulu. October 20, 1903 (pages 1 & 8) Lightning Plays Lively Pranks at Gay Lanai Ranch House

The fierce electrical storm which has been reported as having raged extensively on both Maui and the leeward side of Hawaii seems to have played even more havoc on the small island of Lanai than it did in either of the other places mentioned. The storm struck Lanai on Thursday night of last week and did a great deal of damage. The Gay ranch suffered the most from the fury of the elements. One horse and a cat were killed, two native men were slightly injured, a horse was knocked down, and finally Charles Gay's ranch house was struck by lightning. All this damage was done in less than an hour.

According to the story of the Mauna Loa officers, the Gay ranch house was struck by no less than four different bolts of lightning. At the time this happened there were several Hawaiians in the house. They had been out fishing and were outside the house engaged in cleaning the fish they had caught when the storm suddenly came up and they were driven inside by the rain, which came down in torrents. They stayed in the kitchen.

One bolt of lightning struck the roof of the house just above the pantry. The lightning passed through the pantry roof and floor, apparently doing no damage with the exception that it bored two neat little holes where it passed through the floor and ceiling. A couple days later the occupants noticed a very disagreeable odor emanating from under the house just where the bolt had struck. On investigation a cat was found under the hole which had been bored by the lightning. Poor pussy had evidently crept under the house for shelter and had been struck by the lightning.

The bolt of lightning doing the damage struck the kitchen. It passed through the roof and hit the stove which was completely demolished. A great part of the wood work of the kitchen was also badly splintered. At the time the lightning struck the kitchen several of the Hawaiians who had sought shelter from the rain were there. One of these was hit on the head by the lightning and received a burn, which, luckily is not a serious one. Another Hawaiian was struck in the back but escaped without serious injury.

The other two bolts of lightning which struck the Gay house did not hurt any living being. One of them came through the roof and passed down the partition between the kitchen and another room. It also struck a gun which was leaning against the wall. The lightning following down the barrel, did not damage it, and passed through the floor into the ground. The fourth bolt struck a four by four corner post of the house, splintering it part of the way down until it struck an iron ramrod and leaving it again, ran into the post which it splintered the rest of the way down to the ground. In the field a short distance from the ranch house a horse was struck and almost instantly killed. Another horse was knocked down by the thunderbolt. A native was taking the bridle off his horse when the lightning struck the bridle and knocked it out of his hand. The horse was knocked over, but soon recovered. The Hawaiian escaped injury." [pau]

THE LĀNAʻI CHC is honored to be serving the people of Lanaʻi as a repository of our island's treasured artifacts, historical records and material culture collections.

Donations in 2011 were made by:

Manuel Amoral, Jr./Lanai Trucking
Butch Au
Duane & Sheila U. Black
Ralph Black
Gregorio and Natalie Cabuslay
Castle & Cooke Resorts, LLC
John Dela Cruz
Carol Desha Truman
Augie & Maxine Figuerres
Michelle Fujie
Katie Fuller
Butch Gima
S. Cookie Hashimoto
Craig Halley
Hawaiian Historical Society
The Hawaiian Malacological Society
Rachel Jio
Robert Kinoshita
Kiyomi Kodama
Jack Larsen
Maui County Fire Department
Ross Moody & Family
Warren & Susan Osako
Noboru Oyama
Pine Enterprises, Inc.
Albert & Vonnie Pratt-Turner
Baba Sandi
Janne & Bob Spieker
Kiichi Takahama & Joan Takahama Dang
University of Hawaiʻi-Mānoa:
Anthropology Department
Preservation Department, Hamilton
Library & Library Sciences Program
Young Brothers, Limited

MESSAGES FROM THE CURRENT AND PAST PRESIDENTS OF THE BOARD OF THE LĀNA'I CULTURE & HERITAGE CENTER

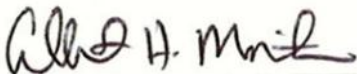
Aloha,

I have lived on Lāna'i most of my life, first as child, with my family at Kō'ele, and experiencing a life style that still fills me with joy and memories that cannot be duplicated. I love Lāna'i and know that the history of Lāna'i and the story of the people who have made Lāna'i home is an important one to share. Through generous support and hard work of many hands, the Lāna'i Culture & Heritage Center has evolved into the institution it is today, with a goal of "Honoring the past and enriching the future".

The Lāna'i CHC is for the people of Lāna'i and those who come to visit our island. Sharing our history helps people appreciate who we are and what Lāna'i is. I know that if we do not care about our history, no one else will. I urge you to join me in helping us care for the cultural legacy of Lāna'i. Your financial donations help to ensure that the work of the center will continue. Your support helps us care for the rich resources which have been donated to the collections of the Lāna'i CHC, and makes it possible for us to be good stewards of Lāna'i's heritage.

On the last page of this newsletter, you will find a form for donations to our "Friends Giving" organization. Please take the time to fill out the form and return it with a donation, to the Lāna'i CHC. Together we can ensure that the history of the land and elders will not be forgotten. We are a part of that history, and our actions today will be the history of tomorrow. The heritage center is open Monday through Saturday, and we are here to serve you. Stop by and reconnect with the history that makes us a unique place in all the world. Mahalo nui!

Sincerely,



Albert Halapē Morita, President



Aloha kākou,

As we move at warp speed through the 21st century I am deeply grateful for the combined effort of all who have brought to fruition the dream of a cultural and historical repository for our island home and her people. The Lāna'i Culture & Heritage Center, through its numerous iterations stands as a testament to all who pass through her doors both physically and virtually. Under the leadership of Executive Director Kepā Maly, the Center has evolved from a small and varied community collection to a well-respected and ever-developing compendium of research-based documents in numerous media formats. None of this would have been possible without the combined effort of all who call Lāna'i home as well as all who share a deep and enduring love for all that she represents.

The Aloha Lāna'i Fundraising event on O'ahu offers an exciting and unique way for the Lāna'i CHC to share all that has been achieved and all that still needs to be accomplished. It is difficult to capture in words what we know is true in our minds and hearts. Lāna'i has played and continues to play a major role in our lives. We owe her so much. I invite you to join us as we bring the message of aloha 'āina to O'ahu. Lāna'i is the last Hawaiian place and the Lāna'i CHC has done an incredible job of capturing the mo'olelo, mele, and 'oli of our home. None of this would have been possible without your kūkua. Please join us at the Mamiya Theater on March 25th for an afternoon and evening filled with family, friends, joy and hope. Your support in developing economic sustainability for the Lāna'i CHC is crucial.

Me ka ha'aha'a



Martha Evans
Founding/Past Board President

PARTING COMMENTS —

In 2011, 9,737 people participated in programs of the Lānaʻi CHC. Many of the guests (island residents and visitors from afar) signed our guest book and shared their thoughts about the work that your support helps make possible. Below are some comments taken from our guest book:

W. & D. Figuera (Kapolei, Hawaiʻi)

“Two days of visiting and reading, well spent!”

N. Etrata (Lanai City)

“Beautiful to see our History!”

J. & D. Morgan (Owexton, KY)

“Very interesting & educational. Mikala was very helpful & a great hostess!”

S. Fuller & R. Liebaur

“Excellent depth of knowledge & presentation. What a rich addition this is to our Lanai visit. Mahalo.”

H. & E. Hussey

“Mahalo to Albert for sharing the stories of Lānaʻi with us!”

B. & S. Fraser

“Thank you for having a location to find out about island people and history.”

D. Rozell (Portland, Oregon)

“Picked pineapple here summer of '65. Good to see artifacts from the days of the pineapple island.”

K. & P. Kupchack (Honolulu, Hawaii)

“So little time, so well displayed. We will return and return to this island.”

J. Schmidt (Seabury Hall, Maui)

“What a tribute to a remarkable history.”

B. & V. Pascua (Waipahu, Hawaii)

“Informative. Very rich history!! Our first visit here, though we've been to Lanai many, many times before.”

Y. Nager

“Amazing! A lot of information and divine guidance. It was neverbefore so easy to get directions and guidance on this island. Grateful I am!”

M. Felipe (Lanai City)

“Mahalo for keeping the history of the island alive!”

K. & P. Harman (Hilo, Hawaii)

“Mahalo i kā 'oukou hana nui a maika'i wale nō. Lei ana o Lānaʻi i ke aloha kanaka.”

M. Morita (Hanalei, Kauai)

“Need more space! So much to see and learn about Lanai.”

C. Kamata (Tokyo, Japan)

“Tiny, but so great!”

G. Caveness (San Antonio, Texas)

“What an important facility to showcase Lanai!”

A. Tanodra (Kihei, Maui)

“We are so blessed to have our roots here on Lanai! Aloha!”

S. & M. Baron-Taltle

“Wonderful educational exhibits especially enjoyed the old posters and the octopus lure. Thank you!”

K. & C. Meyer (Philomath, Oregon)

“Very interesting and well presented! Old pineapple fields were beautiful.”

R. Elias (Kailua, Oahu)

“I like the atmosphere of the museum. Beautiful! I really like the shells ;-)”

L. & J. Matsuoka with Koa and Kapono (Honolulu)

“Ua hiki mai ke ala a me ke aloha i Lānaʻi. E ō mai!”

J. Jameson (Honolulu, Hawaii)

“Wish Lanai could remain as is.”

J. & J. Kant (Pittsburgh, PA)

“Wonderful resource for the community and beyond. Highlight of our visit.”

J. Holland (Honolulu, Hawaii)

“What you are doing here is important. The love you show your community is contagious. All things good for you. Aloha.”

L. & A Streshin (Whistler B.C. Canada)

“It is so important to document your history. Fascinating! Mahalo!”

M. Aalau

“May this wonderful center thrive, & may all visitors & residents learn from Hawaiian culture.”

Plaidbeagle (Palo Alto, California)

“Best place to learn everything there is to know about the history of Lanai. To really understand this island visiting here is a must. They have a timeline showing the very beginnings of the Hawaiian Islands all the way to present days. There are many artifacts from early island life continuing to the Dole era and then to Castle & Cooke. We found it very informative and interesting. The young woman docent was well informed and told us many things we would never have known about Lanaʻi. Our main question was, ‘what happened to the pineapple plantations?’ Now we know, and so will you after your visit. Highly recommend going here.” (tripadvisor.com)

N. Dixon (Maui)

“Came in to introduce myself to Kepā, left blown away. The exhibits are nicely presented, and the information superb! Thanks for the effort invested in the center, the community, and Lanai's culture!”

J. & D. Daly

“Best 'little' museum we've seen.”

To see more comments and a record of visitor's observations over the years, [visit www.lanaichc.org](http://www.lanaichc.org), and our FaceBook and Twitter sites.

LĀNA'Ī CULTURE & HERITAGE CENTER

P.O. Box 631500

Lānai City, Hawaii 96763



**LĀNA'Ī CULTURE & HERITAGE CENTER
NĀ HOALOHA O LĀNA'Ī – FRIENDS-GIVING ORGANIZATION 2012**

Print Name as You Want it to Appear on Membership List

Date

Mailing Address

City

State

Zip

Nā Hoaloaha Giving Levels:

Student __ \$5.00 (Annual)

Kama'āina __ \$20.00 (Annual)

Visiting __ \$25.00 (Annual)

Supporting __ \$100.00 (Annual)

Sustaining __ \$1,000.00 (Life)

Sponsoring __ \$5,000.00 (Life)

Benefactor __ \$10,000.00 (Life)

Other \$ _____

Check enclosed _____, or

Please Charge to my: VISA __ MasterCard __ AMEX __ JCB __

Credit Card #: _____ Exp. Date: ____/____

Cardholder Signature: _____

TO MAKE A DONATION you may choose to write a check or supply credit card information and mail it with this portion of the page to the Lāna'ī Culture & Heritage Center — P.O. Box 631500 Lāna'ī City, Hawai'i 96763.

The Lāna'ī Culture & Heritage Center is a 501(c)(3) tax exempt organization. Donations are tax deductible as allowed by law. A letter for tax purposes will be returned to you.