

**Helu 10035**  
**Naehuelua**  
**Kalanihale, Mahana**  
**Native Register 6:510**

Part of group claim under Lono et al. See Helu 10024.

**Helu 10035**  
**Naehuelua**  
**Mahana**  
**Native Testimony 13:277-278**

10035. Naehuelua.  
Kaleo Koohehikua. Ua ike au i kona apapa aina ma  
ka ili aina o Kahaawinui, Mahana, Lanai.  
1. Pūkeu aina. Pūkeu ma pūkeu.  
Mauka, aina o Konohiki. Kamaiki, pūkeu ma  
aina o Kalawaia. Maunalei, aina o Konohiki.  
Ua loa ia ia kua apapa aina ma kona maunalei

278  
Mauka maunalei aku i ka M. 4. 1844. a ua loa hoi i kona maunalei  
maunalei, ma ka laka maunalei. Mauka aku i ka wa o Kamaiki  
a ua maunalei a hiki i kona maunalei, aole maunalei.  
Kamaiki Koohehikua. Ua oia au ole a pau maunalei,  
pūkeu maunalei.

Kaleo, Sworn. I know his Parcel of land in the ili of "Kahaawinui," Mahana, Lanai.

1 section of land, the boundaries are thus.

Mauka, land of Konohiki. Kamaiki, the same. Kaena, land of Kalawaia. Maunalei, land of Konohiki.





HELU 6904

Palapala Sila Nui

A KE ALII, MAMULI O KA OLELO A KA POE HOONA KULEANA.

*No Es Ma,* Ua hoooho na Luna Hoona i na kumu kuleana aina i ka olelo, he kuleana oiaio ko

*Naehuelua* Kulenna Helu 10035

ma ke **Ano Alodio** iloko o kahi i oleloia malalo.

Nohiia, ma keia Palapala Sila Nui, ke hoike aku nei o **Kalakaua**, ke Alii Nui a ke Akua i kona lokomaikai i hoooho ai maluna o ko Hawaii Pae Aina, i na kanaka a pau, i keia la nona iho, a no kona mau hope Alii, a ua haawi aku oia, ma ke **Ano Alodio** ia *Naehuelua* i kela wahi a pau loa ma *Mahana*.

ma ka Mokupuni o *Lanai*, penei na mokuna:

*Aia* ma keia ili o *Kalanihale* Ahupuaa o *Mahana* Mokupuni o *Lanai*. *Hookahi* apama.

*Ehoomaka* ana ma ke kahi *Homohema*, a e holo ana.

*Akai* 8 1/2° *Hiki* - 1.31 kaula - *pili* me *Halewala*.

*Hema* 45° *Hiki* - 9.67 - " - " *Honohiki*.

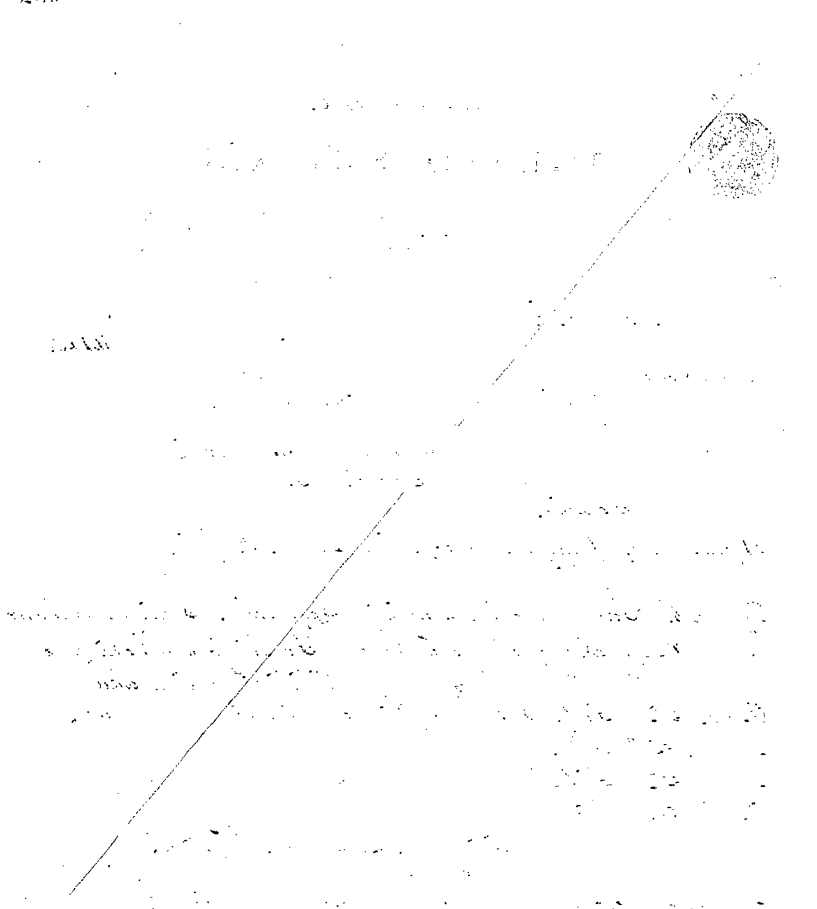
*Hema* 54° *Honi* - 1.44 - " - " - "

*Akai* - 43 1/2° *Honi* - 10.22 - " - " - " *hiki* i kahi i *hoomaka* ai.

*Okona* ili. *1. Eka* - *0 Pu* - *37. Ro*.

Ua huai oia me ke *Honohiki*, a hoo mai keia nona. *Aua* *luolu* ke *Honohiki* i keia.

1290



Maloko o Kea apana 1 Eka - 0 Pu - 37 Ro - 11 In  
 a oi iki aku, a emi iki mai paha. Ua koe nao i ke Aupuni na mine minerela a me na metela a pau.

No Kāhuelā  
 ua aina la i haawiā ma ke **Ano Alodio** a no kona mau hooilina, a me kona waihoā; ua pili nāe ka auhau  
 a ka Poe Ahaoelo e kau like ai ma na aina alodio i kela manawa keia manawa.

**A i mea e ikeā ai**, ua kuu au i ko'u inoa, a me ka Sila Nui o ko Hawaii Pao  
 Aina ma Honolulu i keia la 14 o Mei 1877

Mo. ka Mo  
 He Luhina Kalaiaina  
 J. Math Smith.

1/3 Kalakaua R