

Helu 8557
Kalawai (Kalawaia)
Kikiwi, Maunalei
Native Register 6:468

8557 Kalawai, Lanai Feb. 1, 1848
Aloha oe e Kalopapela a me.
Lanai Joane Kī ma Lima Lorna Kuleana aina.
Eia kōi kuleana ke hoakaka aku
mei ia oukou o Kikiwi ma Maunalei,
, kōi noho ana malalo aku o ke kono-
hiki, Nahaolehua, eia kōi filiilia, ke
mau wahi lo'i iloko o kōi aina, wa'ale
i ke kono-hiki, aole ia o kōna kihapai o
kōi no ia o ko ke Kanaka, ke hakuone
no kōna kihapai.

Ke kumu o kōia lilo ana i ke
kono-hiki i pakaha i kela manawa
aku mei, he ai ohi ke ano o ka lawe
ana, a o kōi manas, e kōi onai kōi
ia'u i lūhi pono ke Kanaka, i lilo pono
alua

Eia kekahi, ke mau wahi lo'i
i ko kōi kihapai a malalo aku au
ona, a he lo'i no kōi no Waimānua a
wahi no ia'u.

Eia kōi kuleana e hāi aku
mei ia oukou Aloha oukou me ka
maluhia

Ma Kalawai

Lanai. Feb. 1, 1848.

Aloha to you, Kalopapela and John li. The commissioners who Quiet Land titles.

Here is my claim that I describe to you, it is Kikiwi at Maunalei. My residency is under that of the *Konohiki*, Nahaolelua. Here is my problem, there are several places of *loi* in my land which have gone to the *Konohiki*. They are not his gardens, but mine, the tenant. His is a *hakuone* (small parcel cultivated for a chief), garden.

The reason that it went the *Konohiki* was one of theft at the time. It was taken to harvest the *ai* (crop of taro). My thought is that what is mine should be returned to me, that the right is for the kanaka who toiled for it.

Also, there are some *loi* in another person's *kihapai*. I am under him. Also a *loi* on the Waimalu aside for me.

That is my claim which is stated to you.

Aloha to you with peace.

By Kalawai [Kalawaia]

Helu 8557
Kalawaia
Maunalei
Native Testimony 13:264-265

8557. Kalawaia
Kawaaiki. Arohikina. Ua ike au i kama mau Afana aina mo Maunalei
Lanai. I Afana Aina
Par. 1. 13. Ikiwalo ma ka ili o Kikiwi
Par. 2. 8 Kihapai uala ma ili o Kikiwi
Par. 3. 1 Kahuahale ma ili o Pohakupili

Afana 1. Mauka. a pui aina o ke Konohiki.
Par. 2. Mauka and all about, land of Konohiki.
Par. 3. Mauka, land of Konohiki. Kaena, the same. Makai, a beach. Kamaiki, land of Konohiki.
Ua loa ia ia kua mau Afana aina mo Kamaiki mai ma
mau alu o ka M. S. 1836. a ua noho auola oia i kua i keia mau mau
mau oia i keia mau mau.
Kaaueaaina Arohikina. Ua oia ma oia a pau ma mau, a pui
ia ma kua ike, ana.

Kawaaiki, Sworn. I know his Parcels of land at Maunalei, Lanai. 3 Parcels of land.

Par. 1. 13 *loi kalo* (taro pond fields) in the *ili* of Kikiwi.

Par. 2. 8 *kihapai uala* (sweet potato gardens) in the *ili* of Kikiwi.

Par. 3. 1 *Kahuahale* (house site) in the *ili* of Pohakupili.

Par. 1. *Mauka* and all about, land of *Konohiki*.

Par. 2. *Mauka* and all about, land of *Konohiki*.

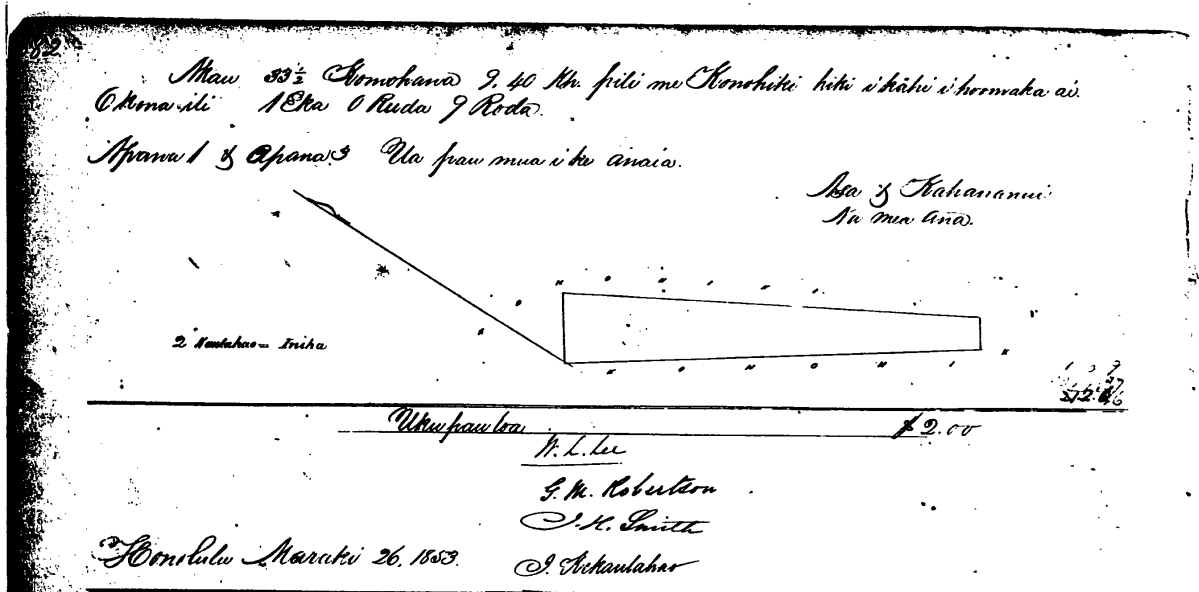
Par. 3. *Mauka*, land of *Konohiki*. *Kaena*, the same. *Makai*, a beach. *Kamaiki*, land of *Konohiki*.

He received these parcels of land from Aimano, before the year 1836, and has held them peaceably to this time. No one has objected.

Kaaueaaina, Sworn. All the words above are true, and my knowledge is the same.

Helu 8557
 Kalawaia
 Kiki [Kikiwi], Maunalei
 Mahele Award Book 5:681-682

Helu 8557 Kalawaia
 Kiki Maunalei Lanai
 From Page 100 Vol. 8.
 Apana 2. Aia ana i ke ili o Kiki ma ke Ahupuaa o Maunalei, Lanai,
 E hoomaka ana ma ke kili o Kamehameha, a iho i ana
 Akau 58 1/2 Hekina 157 Mh. pili me Konoehiki
 Apana 25 Hekina 9.44
 Hema 58 1/2 No. 0.69



From Page 100, Vol. 8

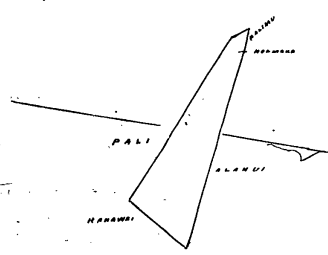
Parcel 2. There in the ili of Kiki [Kikiwi], in the Ahupuaa of Maunalei, Lanai... [metes and bounds] ... 1 Acre, 0 Roods, 9 Rods...

Parcel 1 & Parcel 3, were previously surveyed...

**Helu 8557
Kalawaia
Kikiwi, Maunalei
Mahele Award Book 8:100**

Helu 8557 Kalawaia 1681 v 5 Maunalei Lanai

He ana ana i kekahi Apama aina Kalawaia ma ka ili o Kikiwi Ahupuaa Maunalei Moku o Lanai. E hōmaka ma ka Pahi Ahi. Hea ma Kahi i pili ai ia Ahi ma ma ka Pahi a hōlo ahi. A 75° N. a 57' Kaulaha ma ka Ahi ma 22 1/2' N. o ka Kaulaha ma ka Ahi ma 56' N. o ka Pahi. Kaulaha ma ka Pahi. A 163° N. o ka Kaulaha ma ka Kaulaha. A 71 1/2' N. o ka Kaulaha ma ka Pahi a hōlo i Kahi i hōmaka ai O Pahi i ka Pahi 3' Pahi.



*L. S. Lee
Ma ana aina.*

Kama Apama 2. Awar-681 Vol. 5.


*Wm. Lee
W. L. Lee
G. M. Robertson
J. K. Kaulaha
J. H. Smith*

Hoopulu 12 Aug 1852.

A survey of a certain parcel of land of Kalawaia, in the ili of Kikiwi, Ahupuaa of Maunalei, Island of Lanai. A section of *kalo* land... [metes and bounds – with sections running along the stream and the trail] ... 1 Rood, 37 Rods...

Look at page 681, Vol. 5...

427
27



HELU..... 5386
PALAPALA SILA NUI.

A KE ALII, MAMULI O KA OLELO A KA POE HOONA KULEANA.

NO KA HEA, Ua hooholo na Luna Hooua i na kumu kuleana aia i ka olelo, he kuleana eiaio ko
Kalawaia Kuleana Helu..... 3557
 ma ke **Ano Aloidio** iho ko ka i oleloia malalo.

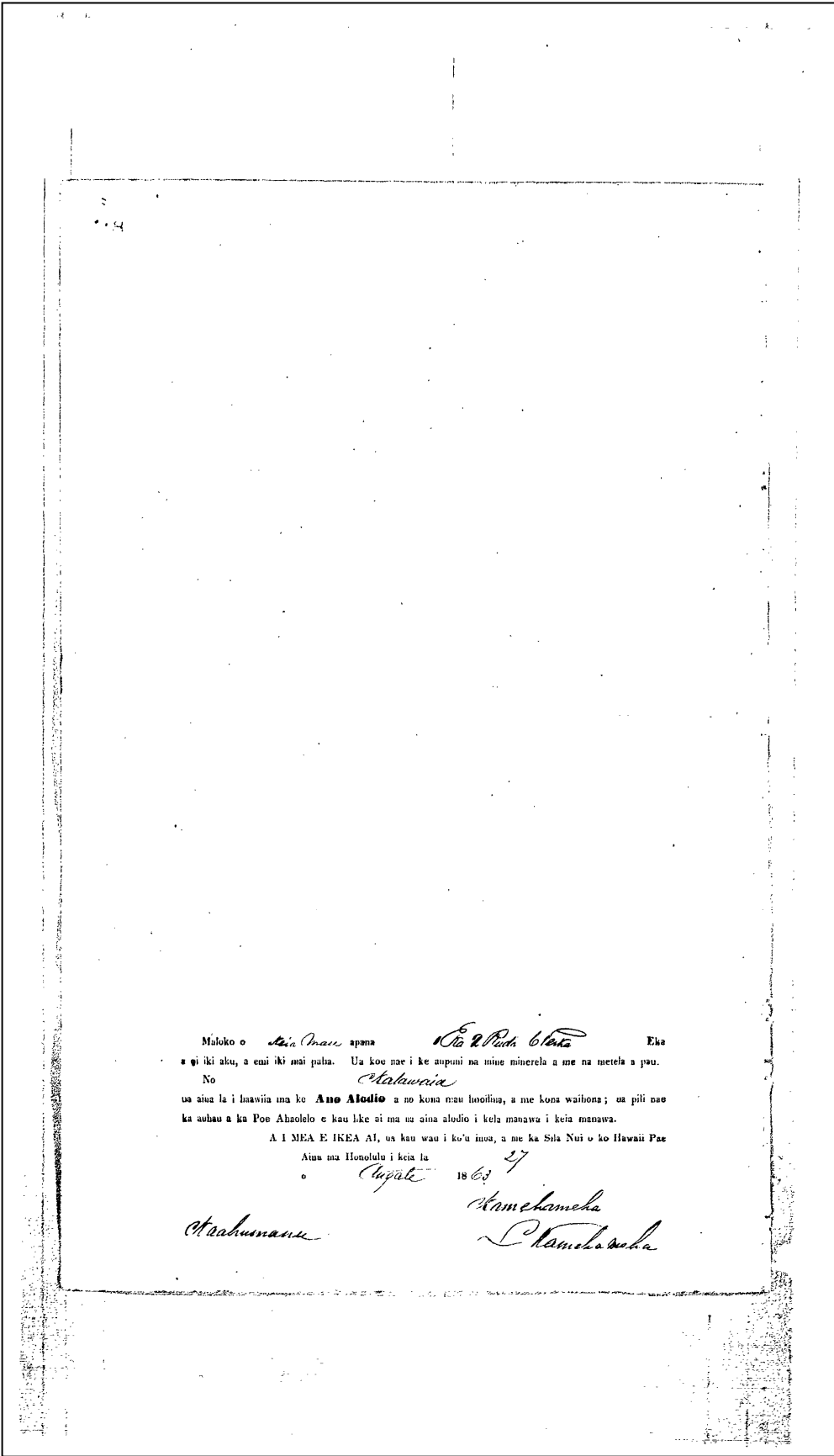
Nolaila, ma keia Palapala Sila Nui, ke hoike aku nei o Kamehameha IV. ko Alii nui a ke Akua
 i kona lokomaikai i hoonoho ai maluna o ko Hawaii Pae Aina, i na kanaka a pau, i keia la nona iho,
 a no kona mau hope alii, ua haawii aku oia ma ke **Ano Aloidio** ia *Kalawaia*
 i kela *Maunalei* wahi a pau loa ma *Kikiwi*
 ma ka moku puni o *Lanai* penei na mokuua,

Apua 1. Ii. Aloidio *Puaia Kala*
Chromata (ma ole Aloidio) Maunalei Kuleana ma Kala

Maunalei	75' Chom	0.59 Chom	(ma ole Kuleana)	
Kema	22 1/2' Kib	41	"	"
"	56	4.62	"	" <i>Kala</i>
Maunalei	43	1.70	"	" <i>Kalawaia</i>
"	7 1/2' Chom	4.83	"	" <i>Maunalei</i>

Apua 2. Chromata (ma ole Aloidio) Chom. a ho

Maunalei	56 1/2' Kib	1.57 Chom	(ma Aloidio)	
Kema	28	9.44	"	"
"	58 1/2' Chom	69	"	"
Maunalei	23 1/2	9.40	"	" <i>Maunalei</i>



Mufoko o *Maui* apana *Maui* Eka
 a i iki aku, a eui iki mai paha. Ua kou nae i ke aupuni na mine minerela a me na metela a pua.
 No *Maui*
 ua aia la i Inaia ma ke **Amo Alodio** a no kona mau luolua, a me kona waihoia; ua pili nae
 ka aubau a ka Poe Aholelo e kau like ai ma na aina alodio i kela manawa i kela manawa.
 A I MEA E IKEA AI, ua kau wau i ko'u inoa, a me ka Sola Nui o ko Hawaii Pae
 Aina ma Honolulu i keia la
 o *Apule* 18 63 *27*
Maui *Kamehameha*
Pamela