

Helu 8588  
Kaleo  
Maunalei  
Native Register 6:471

471

8588 Kaleo  
Aloha ae e S. Kaauwai a me ia Lūmā  
a S. Kama. He hāi aku nei au i kōi kōi  
Lūmāle ana ia oukou o Halehale ana ma  
Maunalei.  
Eia kōi kōle ana ou, he ana lōi  
he 10 malalo aku o kōi.  
He kōle ana pa māhiai kōkōhi  
Ka Kaleo -

Aloha to you, S. Kaauwai, and the Commissioners who Quiet Claims. I hereby tell you of my claim. Haleaha is my land at Maunalei.

Here is my claim, 10 *loi* beneath others.

Also a cultivated lot.

By Kaleo.

Helu 8588  
Kaleo  
Maunalei  
Native Testimony 13:263-264

✓ 8588 Kaleo  
Kalawaia Arohikina. Wa ike au i kama mau Apana aine  
ma Maunalei Lanai. 2 Apana aine.  
Apana 1. 7 loialo ma ka ili aine o Kikiwi.  
2. 1 kahua hale & pa Mahoe wala i ka ili o Kaaealii.  
Apana 1. Penei ma palena. Mauka aine o Konohiki. Kaena palena  
Makai. Ika aine a me ka aine o Konohiki. Kawaiki aine o Konohiki.  
Apana 2. Penei ma palena. Mauka aine o Konohiki. Kaena palena  
Makai. Ika aine a me ka aine o Konohiki.  
Nui aku ka Apana 1. i ka M. H. 1846. Apana 2 ma  
i ka M. H. 1845. a ia noho oluolu oia ma kua mau Apana aine

264  
a hiki i kua mau aine, a he mea keakea.  
Kawaiki Arohikina. He aia ma kua mau aine, a ia hiki ka  
hiki ike ma kua mau aine.

Kalawaia, Sworn. I know his Parcels of land at Maunalei, Lanai. 2 Parcels of land.

Parcel 1. 7 loi kalo (taro pond fields) in the ili of Kikiwi.

Parcel 2. 1 kahua hale (house site) & sweet potato lot in the ili of Kaaealii.

Parcel 1. The boundaries are thus. Mauka, land of Konohiki. Kaena, the same. Makai, my land, and land of Konohiki. Kamaiki, land of Konohiki.

Parcel 2. The boundaries are thus. Mauka, land of Konohiki. Kaena, the same. Makai, a beach. Kamaiki, land of Konohiki.

I gave him parcel 1 in the year 1846. Parcel 2 was from Koia, in the year 1845. He has held these parcel of land peaceably to this time. No one has objected.

Kawaiki, Sworn. All the words above are true. My knowledge is exactly the same as his.

*Helu 8588 Kaleo*      *Maunalei Lānaʻi*

*Aia ma ka Moku o Maunalei, Lānaʻi. Oia Apana*

*Apana 1. Aia ma ka ili o Kihiri. O hōrmata ana ma ka kiki Māu, a i hōl ana*

<i>Hōma</i>	<i>17 1/2</i>	<i>Kihina</i>	<i>1.58</i>	<i>Kh. pūl ana</i>	<i>Kenehiti</i>
<i>Māu</i>	<i>66 1/2</i>	<i>Kōmehana</i>	<i>0.96</i>		
<i>Māu</i>	<i>42 1/2</i>	<i>Kōmehana</i>	<i>0.90</i>		
<i>Māu</i>	<i>67 1/2</i>	<i>Kihina</i>	<i>1.12</i>		<i>hiki i hōl ana i hōrmata ai.</i>

*O kōma ili*      *16.7 Roda.*

*Apana 2. Aia ma ka ili o Kihiri. O hōrmata ana ma ka kiki Māu, a i hōl ana*

<i>Hōma</i>	<i>34</i>	<i>Kōmehana</i>	<i>0.25</i>	<i>Kh. pūl ana</i>	<i>Kenehiti</i>
<i>Hōma</i>	<i>18 1/2</i>	<i>Kihina</i>	<i>0.94</i>		
<i>Māu</i>	<i>68 1/2</i>	<i>Kihina</i>	<i>0.30</i>		
<i>Māu</i>	<i>18 1/2</i>	<i>Kōmehana</i>	<i>0.83</i>		<i>hiki i hōl ana i hōrmata ai.</i>

*O kōma ili*      *3.7 Roda.*

*Apana 3. Aia ma ka ili o Kaunāli. O hōrmata ana ma ka kiki Hōma, a i hōl ana*

<i>Māu</i>	<i>28 1/2</i>	<i>Kihina</i>	<i>7.08</i>	<i>Kh. pūl ana</i>	<i>Kenehiti</i>
<i>Māu</i>	<i>52 1/2</i>	<i>Kōmehana</i>	<i>10.14</i>		
<i>Hōma</i>	<i>38 1/2</i>	<i>Kōmehana</i>	<i>7.53</i>		
<i>Hōma</i>	<i>56 1/2</i>	<i>Kihina</i>	<i>12.00</i>		<i>hiki i hōl ana i hōrmata ai.</i>

*O kōma ili*      *7 Eka 3 Roda 3 1/2 Roda.*

*1. Kaulaha - Eika*

*2. Kaulaha - Eika*

685

*3. Kaulaha - Eika*

*Ulu pūl ana*  
*W. L. Lee*

*G. M. Robertson*  
*J. H. Smith*

*Honolulu, Mānaka 28, 1863*      *A. Kaulaha*

There in the *Ahupuaa* of Maunalei, Lanai. 2 Parcels.

Parcel 1. Division 1. There in the *ili* of Kikiwi... [metes and bounds] ... 16.7 Rods...

Parcel 1. Davison 2. There in the *ili* of Kikiwi... [metes and bounds] ... 3.7 Rods...

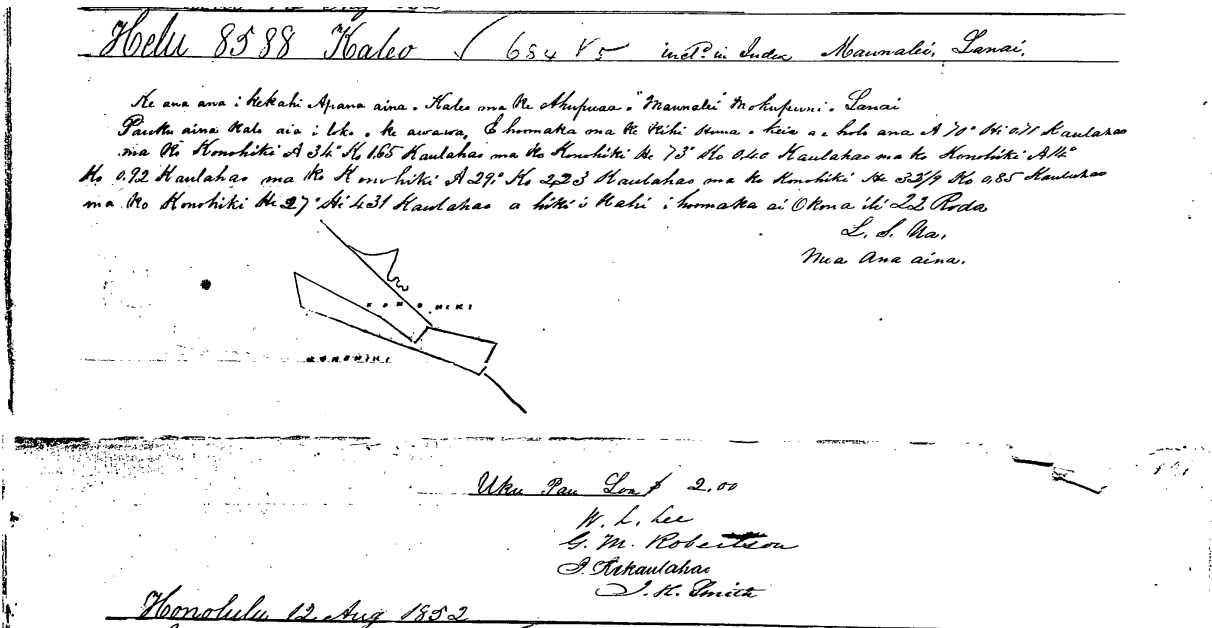
Parcel 2. There in the *ili* of Kaealii... [metes and bounds] ... 7 Acres, 3 Roods, 34.8 Rods...

**Helu 8588**

**Kaleo**

**Kikiwi, Maunalei**

**Mahele Award Book 8:100-101**



Survey of a certain Parcel of land of Kaleo, in the *Ahupuaa* of Maunalei, Island of Lanai. Section of *kalo* land in the valley... [metes and bounds] ... 22 Rods...

Royal Patent No. 5383  
 Kaleo  
 Maunalei, Lanai  
 Book 21:421-422

421  
 21



HELU.....5383  
**PALAPALA SILA NUI.**

A KE ALII, MAMULI O KA OLELO A KA POE HOONA KULEANA.

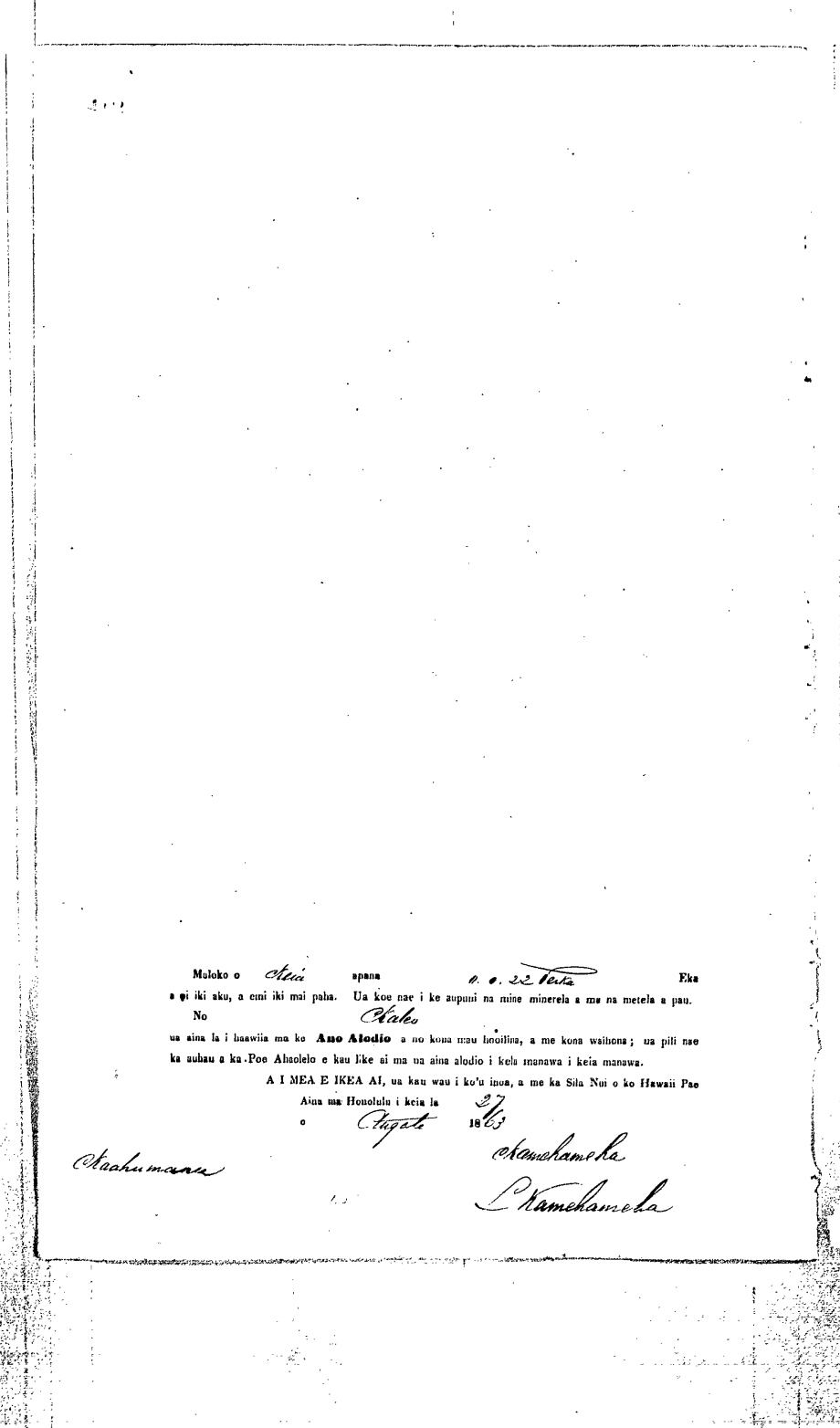
**NO KA MEA,** Ua hoololo na Lona Hoona i na kumu kuleana aina i ka olelo, ho' kuleana oiaio ko  
*Chale* Kuleana Helu.....8588  
 ma ke **Ano Alodio** iloko o kahi i oleloia malalo.

Nolaila, ma keia Palapala Sila Nui, ke hoike aku nei o Kamehameha IV. ke Alii nui a ke Akua  
 i kona lokomaikai i hoonoho ai maluna o ko Hawaii Pae Aina, i na kanaka a pau, i keia la noua ila,  
 a no kona mau tope alii, ua hanaui aku oia ma ke **Ano Alodio** ia *Chale*  
 i kela *Lanai* wahi a pau loa'na *Maunalei*  
 ma ka mookupuni o *Lanai* penel na mookuna,

*Puaka aina Chale - holo: He Ounawa*  
*Chomaha (ma He Chike Kama e holo*

<i>Mau</i>	<i>70"</i>	<i>Wid</i>	<i>0.71</i>	<i>Chaul</i>	<i>Ma</i>	<i>Maunalei</i>
	<i>34</i>	<i>Chom</i>	<i>1.65</i>	"	"	"
<i>Kama</i>	<i>73</i>	"	<i>40</i>	"	"	"
<i>Mau</i>	<i>14</i>	"	<i>92</i>	"	"	"
	<i>29</i>	"	<i>3.23</i>	"	"	"
<i>Kama</i>	<i>22 1/2</i>	"	<i>85</i>	"	"	"
	<i>27</i>	<i>Wid</i>	<i>4.31</i>	"	"	"

*He Se Pata*



Muloko o *Maui* apana *o. o. 22. 1863* Eka  
a i iku aku, a emi iku mai pala. Ua kuu nae i ke aupuni na mine minerela a me na metela a pau.

No *Kahele*  
ua aina la i haawii ma ke **Ane Aloha** a no kona mau hooulu, a me kona waiho; ua pili nae  
ka subau a ka-Poo Aholelo e kuu like ai ma ua aina aloha i kela manawa i keia manawa.

A I MEA E IKEA AI, ua kuu wau i ko'u inoa, a me ka Sila Nui o ko Hawaii Pae

Aina ma Honolulu i keia la *27*  
o *1863*

*Kaahumanu*

*Kamehameha*  
*Kamehameha*