

**Palapala Sila Nui Helu 1928  
R. Koiku**

**Ma ka Ahupuaa of Pawili, Mokupuni o Lanai.**

E hoomaka ana ma ke kihi  
Hikina o keia aina kahi i  
hui ai o Kaohai me Pawili  
e pili ana i ke Kahakai ma  
ka aoao makai o ka Loko a  
e holo ana i ka

Hema 35° Ko. 1282 pauku pili  
me Kaohai;  
Hema 54  $\frac{3}{4}$  ° Ko. 3150 pauku  
pili me Kaohai;  
Akau 24  $\frac{1}{2}$ ° Hi. 2340 pauku  
pili me Aupuni;  
Ak. 60° Hi. 2324 pauku pili  
me Kekua;  
Hema 37° Hi. 5.47 pauku pili  
me Kahakai,  
hiki i ke kihi mua.  
O kona ili 34 93/100 Eka.

Iloko o keia aina na Eka  
Kahua Hale Pule Elua.

John Richardson  
Mea ana aina.  
Novemaba 11<sup>th</sup>, 1855.  
Lahaina.

Translation:

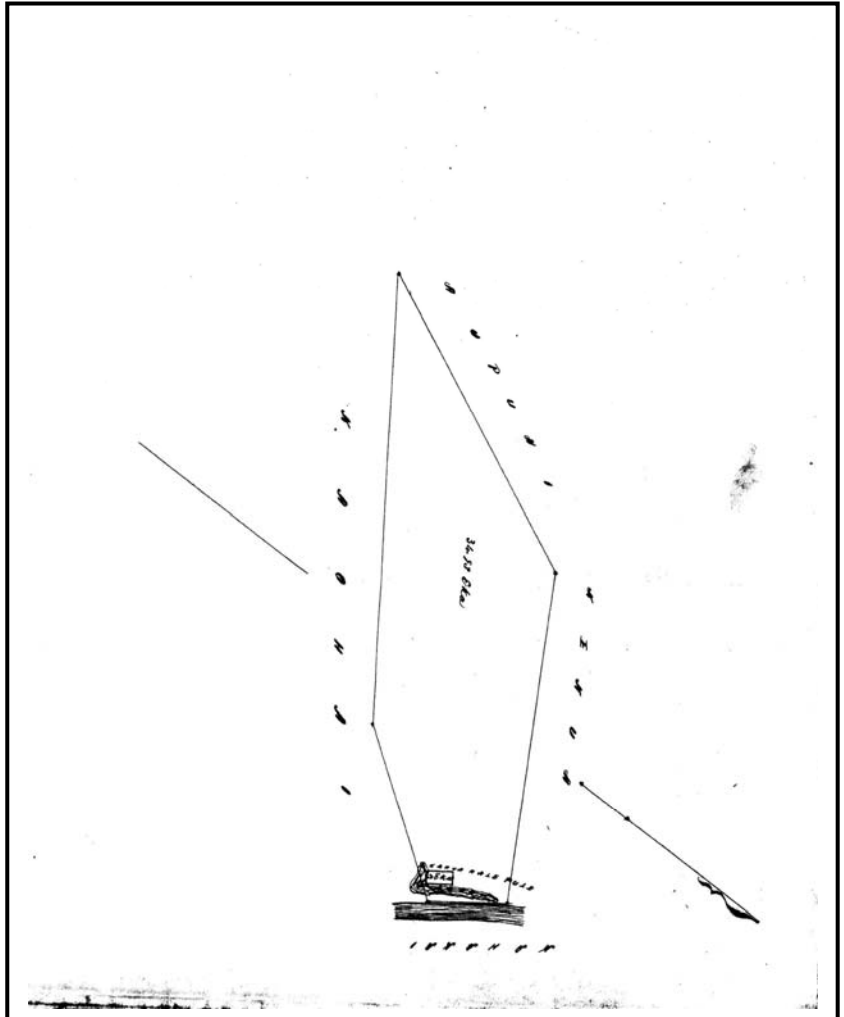
Beginning Eastern corner  
of this lands, at the place  
where Kaohai and Pawili  
meet at the shore, on the  
beach side of the Pond,  
and running to the:

South 35° West 1282 links adjoining Kaohai;  
South 54  $\frac{3}{4}$  ° West 3150 links adjoining Kaohai;  
North 24  $\frac{1}{2}$ ° East 2340 links adjoining the Government land;  
North 60° East 2324 links adjoining Kekua's land;  
South 37° East 5.47 links along the Beach, to the corner of commencement.

Containing 34 93/100 Acres.

There are within this land, two acres for the Church Lot.

John Richardson,  
Surveyor.  
November 11<sup>th</sup>, 1855. Lahaina. [Maly, translator]



**Figure 1. Notes of Survey for Royal Patent Land  
Grant No. 1928 to R. Koiku, at Pawili.  
Hawaii State Archives.**



*Patent*

*[Faint, mostly illegible text, possibly a title or header section]*

a maloko o ia Apana *31 1/2* eka a oi iki aku emi iki nui pala.  
Eia ke kumu o ka lilo ana; ua haawi mai oia iloko o ka waihona waiwai o ke Aupuni i *ma 1/2*  
*ke \$22 1/2*  
Ako, ua koe i ke Aupuni na mine minerala a me na mine metala a pau.

No *Honolulu*  
ua aina la i haawiia, no *ma* mau loa aku no ma ke ano alodio a no ko *ma* mau looilina, a me  
ko *ma* waihona, ua pili nao ka auhau a ka Poe Ahaolelo o kau like ai ma na aina alodio a pau i kela  
manawa i keia manawa.

A i mea e ikeai, ua kau wau i ko'u inoa, a me ka Sila Nui o ko Hawaii  
Pae Aina, ma Honolulu, i keia la *21 1/2*  
*DeWmaka*, 1856

*Haakumanu*

*Hanaka*